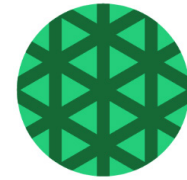




Oregon Center on Behavioral Health & Justice Integration

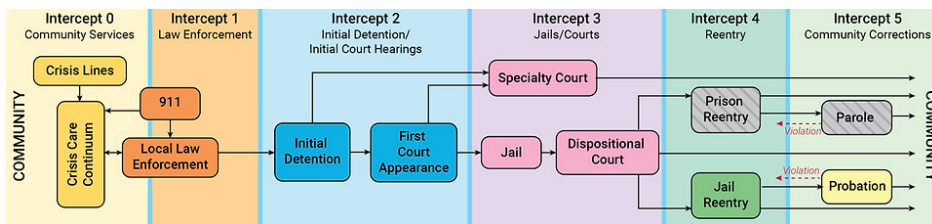


What does The Center do?

GOBHI has a specialized program called the Oregon Center on Behavioral Health & Justice Integration (The Center). We are honored to work in partnership with the Oregon Health Authority who provides a statewide contract for this program. The Center provides consulting, training, and technical assistance for behavioral health, justice partners, and other key community stakeholders. There is no cost for this technical assistance. The Center's purpose is to enhance knowledge and improve practices aimed at treating people who are at risk of becoming incarcerated or are already within the corrections system due to primarily having symptoms of serious behavioral health conditions, neurocognitive conditions, and/or intellectual/developmental disabilities.

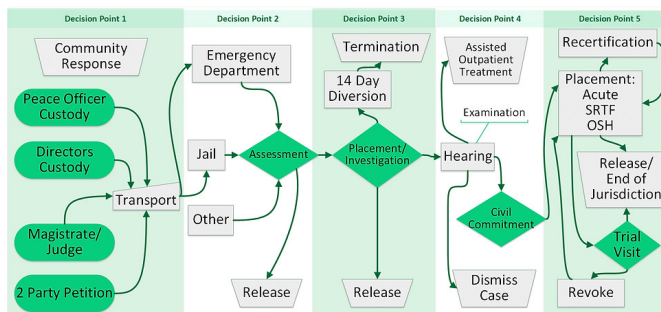
Areas of Specialty:

Sequential Intercept Mapping (SIM)



- Brings local expertise together
- Identifies how BH/Substance use and criminal justice intersect
- Identifies opportunities and resources for diverting to treatment over corrections
- Identifies gaps in services

Civil Commitment Mapping (CCM)



- Focused on best outcomes
- Identifies opportunities for improvement of services
- Creates action plans to support overcoming barriers in the system

Crisis Intervention Team (CIT)

- CIT brings community resources together
- Promotes best outcomes for people experiencing behavioral health concerns
- Facilitates access to treatment over criminal justice system
- Telecom CIT | Corrections CIT
- Advanced Crisis De-escalation Certification for CIT trained professionals (ACDC/CIT)

Jail Diversion/Deflection & Fitness to Proceed

- Consulting/Technical Assistance | Specialized Trainings
- Data Projects | Toolkits (ocbhji.org)
- Facilitating multi-stakeholder conversations about specialized topics

Greater Oregon Behavioral Health, Inc. (GOBHI)

3729 Klindt Dr., The Dalles, OR 97058 | 800-493-0040 | 541-298-2101
ocbhji@gobhi.org | ocbhji.org