

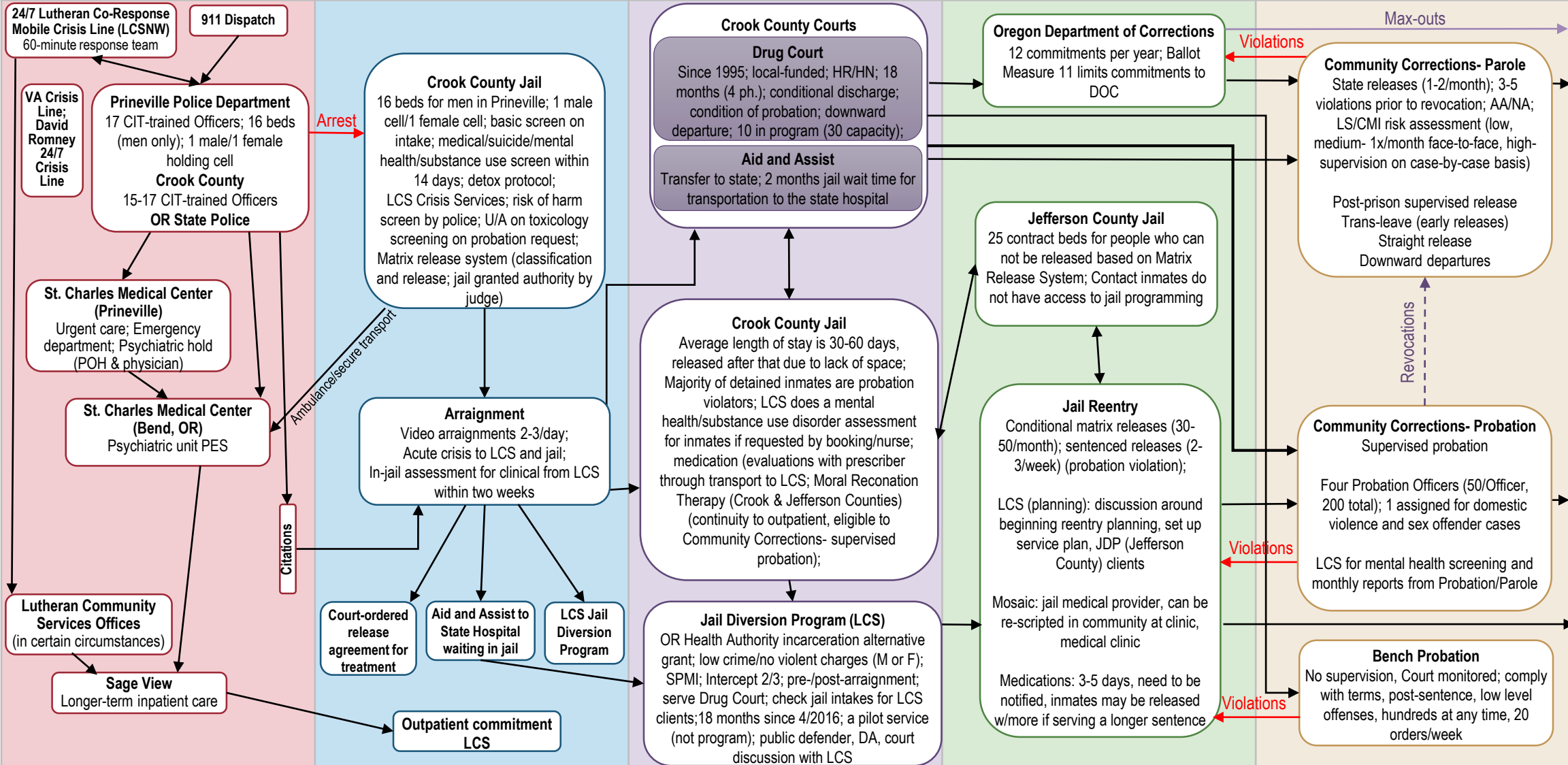
Intercept 1 Law Enforcement and Emergency Services

Intercept 2 Initial Detention and Initial Court Hearings

Intercept 3 Jails and Courts

Intercept 4 Reentry

Intercept 5 Community Corrections and Community Supports



COMMUNITY

COMMUNITY

Behavioral Health
Lutheran Community Services Northwest; St. Charles Health System

Recovery Supports
Craig's Compassionate Café (community-based hot meal site, M-F lunch); Mid-Oregon Personnel

Housing/Shelter
Redemption House (shelter, lottery basis); Neighbor Impact; Housing Works (HUD); CHOICE MATTERS LCS; LCS supported employment & rental assistance w/support